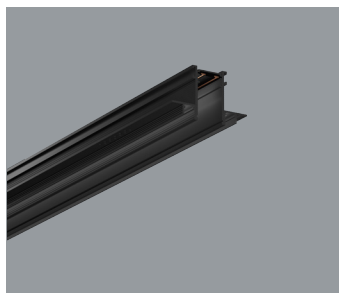


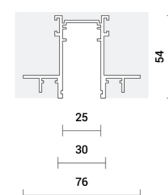


INSIGHT RECESSED PROFIL

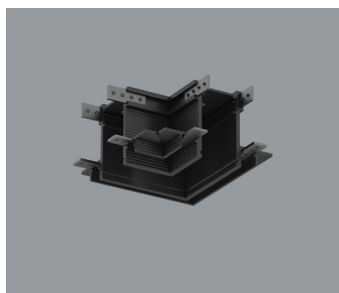


Code	Name	Weight
36.0001.01	Insight recessed profile, 48V DC, L=1000mm, white	1,10kg
36.0001.03	Insight recessed profile, 48V DC, L=1000mm, black	1,10kg
36.0002.01	Insight recessed profile, 48V DC, L=2000mm, white	2,20kg
36.0002.03	Insight recessed profile, 48V DC, L=2000mm, black	2,20kg
36.0003.01	Insight recessed profile, 48V DC, L=3000mm, white	3,30kg
36.0003.03	Insight recessed profile, 48V DC, L=3000mm, black	3,30kg

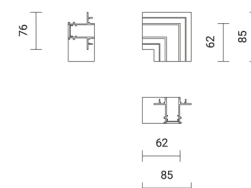
Allowable maximum current of a single electrical circuit - 10A (480W)



INSIGHT CORNER RECESSED



Code	Name	Weight
36.0021.01	L-shaped recessed-mounted mechanical connector, 48V DC, L=85mm, white	0,12kg
36.0021.03	L-shaped recessed-mounted mechanical connector, 48V DC, L=85mm, black	0,12kg

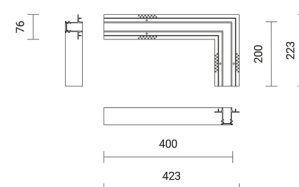


INSIGHT CORNER RECESSED



Code	Name	Weight
36.0023.01	L-shaped connector, ceiling / ceiling, recessed-mounted, 48V DC, white	0,62kg
36.0023.03	L-shaped connector, ceiling / ceiling, recessed-mounted, 48V DC, black	0,62kg

Allowable maximum current of a single electrical circuit - 10A (480W)

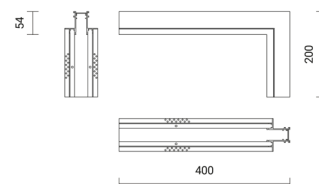


INSIGHT CORNER RECESSED

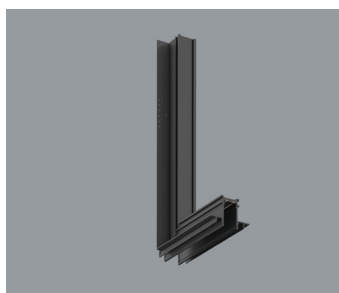


Code	Name	Weight
36.0024.01	L-shaped connector, internal wall / ceiling, recessed-mounted, 48V DC, white	ON/OFF; DALI 0,62kg
36.0024.03	L-shaped connector, internal wall / ceiling, recessed-mounted, 48V DC, black	ON/OFF; DALI 0,62kg

Allowable maximum current of a single electrical circuit - 10A (480W)

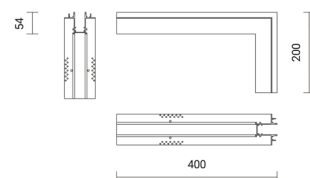


INSIGHT CORNER RECESSED

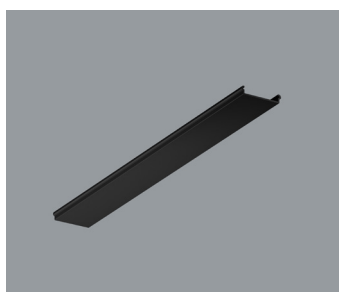


Code	Name	Weight
36.0025.01	L-shaped connector, external wall / ceiling, recessed-mounted, 48V DC, white	ON/OFF; DALI 0,62kg
36.0025.03	L-shaped connector, external wall / ceiling, recessed-mounted, 48V DC, black	ON/OFF; DALI 0,62kg

Allowable maximum current of a single electrical circuit - 10A (480W)

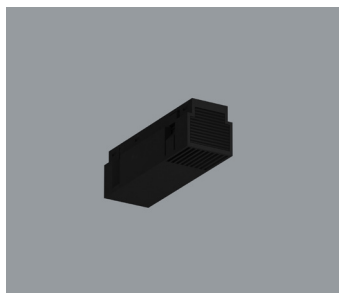


INSIGHT COVER



Code	Name	Weight
36.0071.01	Plastic cover, L=1000mm, white	0,08kg
36.0071.03	Plastic cover, L=1000mm, black	0,08kg
36.0072.01	Plastic cover, L=2000mm, white	0,16kg
36.0072.03	Plastic cover, L=2000mm, black	0,16kg
36.0073.01	Plastic cover, L=3000mm, white	0,24kg
36.0073.03	Plastic cover, L=3000mm, black	0,24kg

INSIGHT FEED

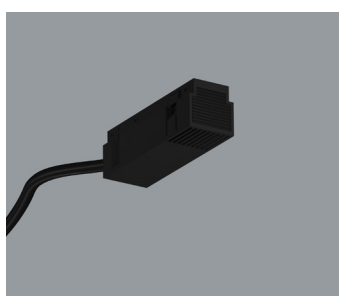


Code	Name		Weight
36.0031.01	Electrical linear connector, 48V DC, white	ON/OFF; DALI	0,02kg
36.0031.03	Electrical linear connector, 48V DC, black	ON/OFF; DALI	0,02kg

Allowable maximum current of a single electrical circuit - 10A (480W)

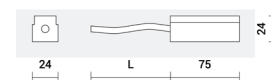


INSIGHT FEED CABLE

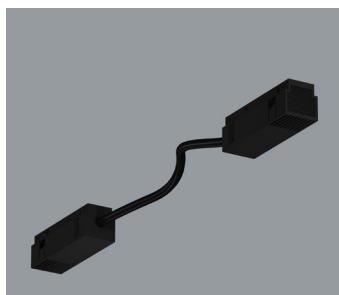


Code	Name		Weight
36.0035.01	Power supply connector with cable L=600mm, white	ON/OFF; DALI	0,03kg
36.0035.03	Power supply connector with cable L=600mm, black	ON/OFF; DALI	0,03kg
36.0036.01	Power supply connector with cable L=1500mm, white	ON/OFF; DALI	0,03kg
36.0036.03	Power supply connector with cable L=1500mm, black	ON/OFF; DALI	0,03kg

Allowable maximum current of a single electrical circuit - 10A (480W)

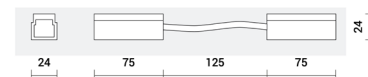


INSIGHT FEED CONNECTOR



Code	Name		Weight
36.0041.01	Electrical linear connector with cable L=140mm, 48V DC, white	ON/OFF; DALI	0,06kg
36.0041.03	Electrical linear connector with cable L=140mm, 48V DC, black	ON/OFF; DALI	0,06kg

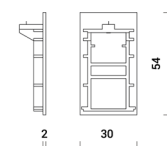
Allowable maximum current of a single electrical circuit - 10A (480W)



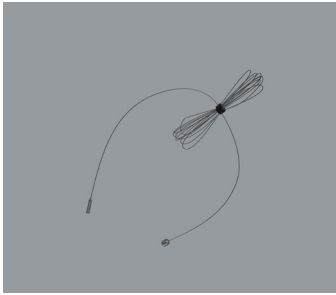
INSIGHT ENDCAP



Code	Name		Weight
36.0051.01	Endcap, white (1pc)		0,01kg
36.0051.03	Endcap, black (1pc)		0,01kg



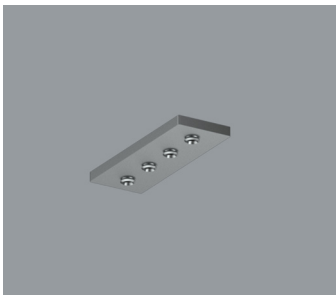
INSIGHT SUSPENSION



Code	Name
36.0061	Suspension set L=1500mm (1pc)

Allowable maximum current of a single electrical circuit - 10A (480W)

INSIGHT CONNECTOR



Code	Name
36.0066.01	Linear internal mechanical connector, white (1pc)
36.0066.03	Linear internal mechanical connector, black (1pc)

In a recessed-mounted profile - 4 pieces required for connection

Additional information

- The 48 V cables should be run separately from the mains connections and mains cables to ensure good EMC conditions.
- The 48 V DC output wiring should be kept as short as possible to ensure good EMC.
- The max. secondary cable length is 30 m (60 m circuit) till beginning of a grounded metal track light.
- If track light is not grounded or made of plastic, cable length including track light is 30 m.
- Inside the track light cable length is limited by voltage drop that last LMI 48V in the track light is still supplied with minimum 46 V.
- Secondary switching is not permitted. It is allowed to add or remove one DC/DC-LED Driver during operation.