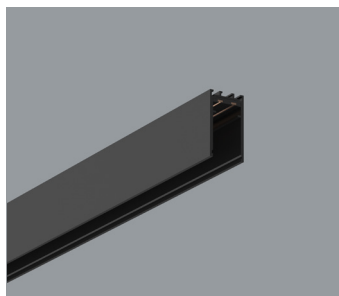


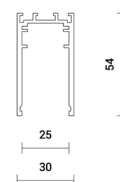


## INSIGHT SURFACE/SUSPENDED PROFIL

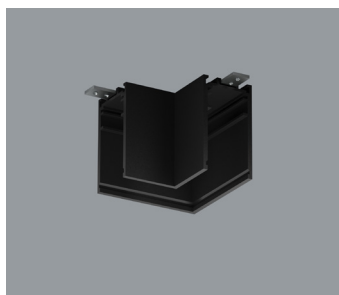


| Code              | Name  | Weight |
|-------------------|---|--------|
| <b>36.0011.01</b> | Insight surface mounted profile, 48V DC, L=1000mm, white ON/OFF; DALI | 1,00kg |
| <b>36.0011.03</b> | Insight surface mounted profile, 48V DC, L=1000mm, black ON/OFF; DALI | 1,00kg |
| <b>36.0012.01</b> | Insight surface mounted profile, 48V DC, L=2000mm, white ON/OFF; DALI | 2,00kg |
| <b>36.0012.03</b> | Insight surface mounted profile, 48V DC, L=2000mm, black ON/OFF; DALI | 2,00kg |
| <b>36.0013.01</b> | Insight surface mounted profile, 48V DC, L=3000mm, white ON/OFF; DALI | 3,00kg |
| <b>36.0013.03</b> | Insight surface mounted profile, 48V DC, L=3000mm, black ON/OFF; DALI | 3,00kg |

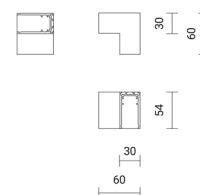
Allowable maximum current of a single electrical circuit - 10A (480W)



## INSIGHT CORNER SURFACE/SUSPENDED



| Code              | Name  | Weight |
|-------------------|---|--------|
| <b>36.0022.01</b> | L-shaped surface-mounted mechanical connector, 48V DC, L=74mm, white ON/OFF; DALI | 0,10kg |
| <b>36.0022.03</b> | L-shaped surface-mounted mechanical connector, 48V DC, L=74mm, black ON/OFF; DALI | 0,10kg |

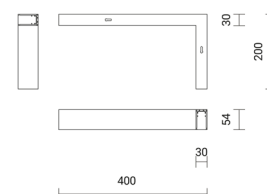


## INSIGHT CORNER SURFACE/SUSPENDED

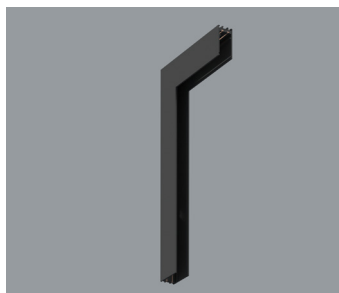


| Code              | Name   | Weight |
|-------------------|--|--------|
| <b>36.0026.01</b> | L-shaped connector, ceiling / ceiling, surface mounted, 48V DC, white ON/OFF; DALI | 0,56kg |
| <b>36.0026.03</b> | L-shaped connector, ceiling / ceiling, surface mounted, 48V DC, black ON/OFF; DALI | 0,56kg |

Allowable maximum current of a single electrical circuit - 10A (480W)

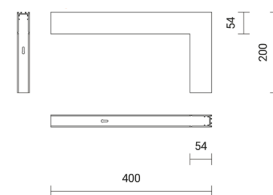


## INSIGHT CORNER SURFACE/SUSPENDED



| Code              | Name  | Weight              |
|-------------------|---|---------------------|
| <b>36.0027.01</b> | L-shaped connector, internal wall / ceiling, surface mounted, 48V DC, white | ON/OFF; DALI 0,54kg |
| <b>36.0027.03</b> | L-shaped connector, internal wall / ceiling, surface mounted, 48V DC, black | ON/OFF; DALI 0,54kg |

Allowable maximum current of a single electrical circuit - 10A (480W)

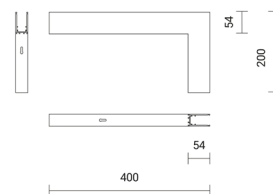


## INSIGHT CORNER SURFACE/SUSPENDED

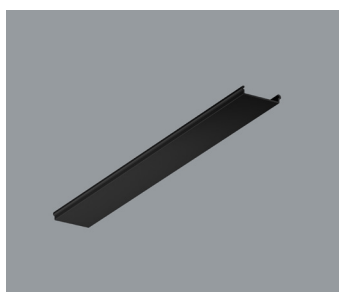


| Code              | Name  | Weight              |
|-------------------|---|---------------------|
| <b>36.0028.01</b> | L-shaped connector, external wall / ceiling, surface mounted, 48V DC, white | ON/OFF; DALI 0,52kg |
| <b>36.0028.03</b> | L-shaped connector, external wall / ceiling, surface mounted, 48V DC, black | ON/OFF; DALI 0,52kg |

Allowable maximum current of a single electrical circuit - 10A (480W)

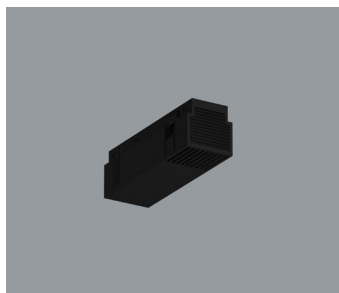


## INSIGHT COVER



| Code              | Name                           | Weight |
|-------------------|--------------------------------|--------|
| <b>36.0071.01</b> | Plastic cover, L=1000mm, white | 0,08kg |
| <b>36.0071.03</b> | Plastic cover, L=1000mm, black | 0,08kg |
| <b>36.0072.01</b> | Plastic cover, L=2000mm, white | 0,16kg |
| <b>36.0072.03</b> | Plastic cover, L=2000mm, black | 0,16kg |
| <b>36.0073.01</b> | Plastic cover, L=3000mm, white | 0,24kg |
| <b>36.0073.03</b> | Plastic cover, L=3000mm, black | 0,24kg |

## INSIGHT FEED

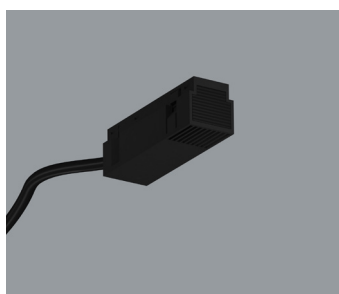


| Code              | Name                                       |              | Weight |
|-------------------|--|--------------|--------|
| <b>36.0031.01</b> | Electrical linear connector, 48V DC, white | ON/OFF; DALI | 0,02kg |
| <b>36.0031.03</b> | Electrical linear connector, 48V DC, black | ON/OFF; DALI | 0,02kg |

Allowable maximum current of a single electrical circuit - 10A (480W)

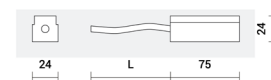


## INSIGHT FEED CABLE

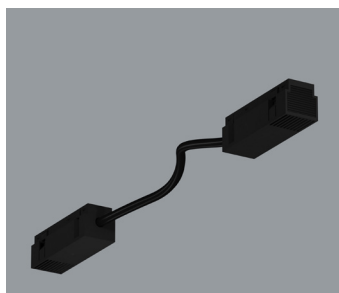


| Code              | Name  |              | Weight |
|-------------------|---|--------------|--------|
| <b>36.0035.01</b> | Power supply connector with cable L=600mm, white  | ON/OFF; DALI | 0,03kg |
| <b>36.0035.03</b> | Power supply connector with cable L=600mm, black  | ON/OFF; DALI | 0,03kg |
| <b>36.0036.01</b> | Power supply connector with cable L=1500mm, white | ON/OFF; DALI | 0,03kg |
| <b>36.0036.03</b> | Power supply connector with cable L=1500mm, black | ON/OFF; DALI | 0,03kg |

Allowable maximum current of a single electrical circuit - 10A (480W)

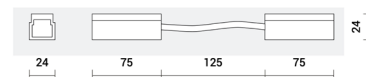


## INSIGHT FEED CONNECTOR



| Code              | Name  |              | Weight |
|-------------------|---|--------------|--------|
| <b>36.0041.01</b> | Electrical linear connector with cable L=140mm, 48V DC, white | ON/OFF; DALI | 0,06kg |
| <b>36.0041.03</b> | Electrical linear connector with cable L=140mm, 48V DC, black | ON/OFF; DALI | 0,06kg |

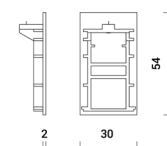
Allowable maximum current of a single electrical circuit - 10A (480W)



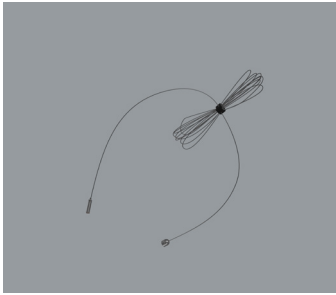
## INSIGHT ENDCAP



| Code              | Name                |  | Weight |
|-------------------|---------------------|--|--------|
| <b>36.0051.01</b> | Endcap, white (1pc) |  | 0,01kg |
| <b>36.0051.03</b> | Endcap, black (1pc) |  | 0,01kg |

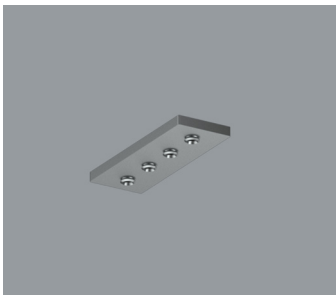


## INSIGHT SUSPENSION



| Code           | Name                          |
|----------------|-------------------------------|
| <b>36.0061</b> | Suspension set L=1500mm (1pc) |

## INSIGHT CONNECTOR



| Code              | Name  |
|-------------------|---|
| <b>36.0066.01</b> | Linear internal mechanical connector, white (1pc) |
| <b>36.0066.03</b> | Linear internal mechanical connector, black (1pc) |

In a surface-mounted profile - 2 pieces required for connection

## Additional information

- The 48 V cables should be run separately from the mains connections and mains cables to ensure good EMC conditions.
- The 48 V DC output wiring should be kept as short as possible to ensure good EMC.
- The max. secondary cable length is 30 m (60 m circuit) till beginning of a grounded metal track light.
- If track light is not grounded or made of plastic, cable length including track light is 30 m.
- Inside the track light cable length is limited by voltage drop that last LMI 48V in the track light is still supplied with minimum 46 V.
- Secondary switching is not permitted. It is allowed to add or remove one DC/DC-LED Driver during operation.